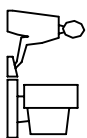
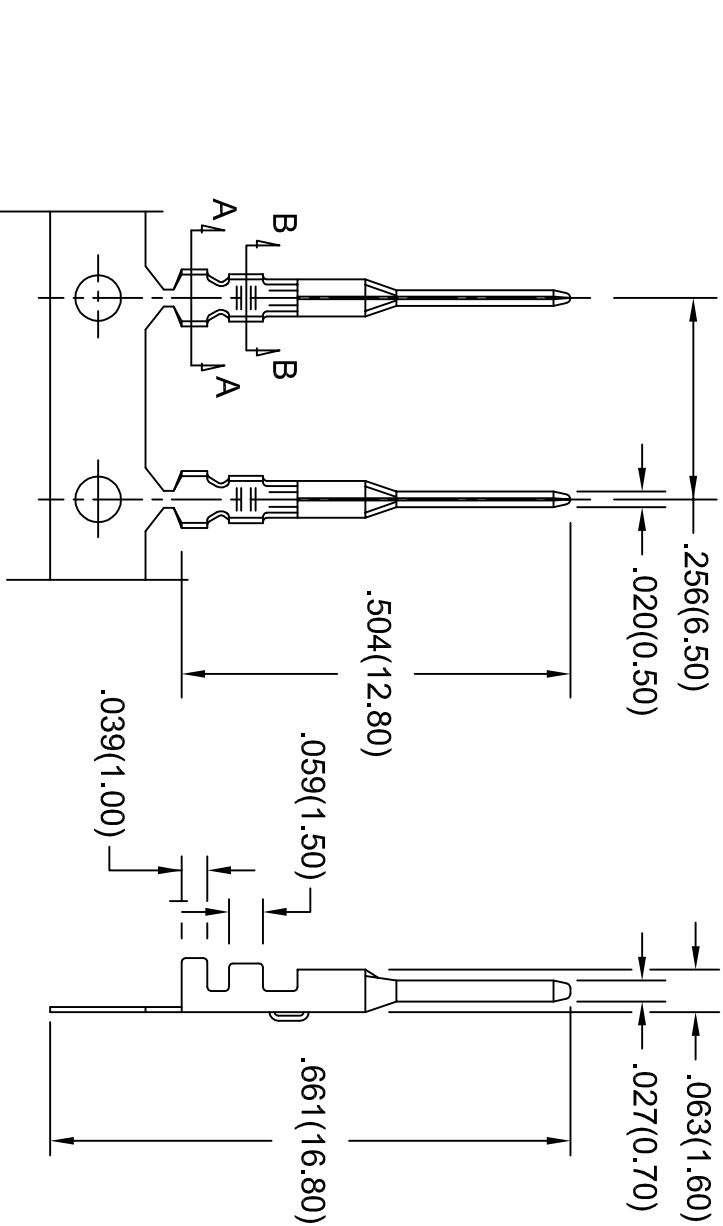


THIS IS A C.A.D. GENERATED DRAWING
DO NOT MAKE MANUAL REVISIONS TO MASTER.
ALL TOLERANCES UNLESS OTHERWISE SPECIFIED ±.015



ISSUE NUMBER
ORIGINAL
. 1



MATERIAL:
.0080(0.20) THICK COPPER ALLOY, TIN PLATED

PART NUMBER 566-290-711 WILL BE IN REEL 12,000 PCS.
PART NUMBER 566-290-711P60 WILL BE IN STRIP 60 PCS.

SECTION "A-A"

566 SERIES MALE CRIMP CONTACT

EDAC INC
TORONTO, ONTARIO
CANADA
YOUR CONNECTION TO QUALITY & SERVICE

THESE DRAWINGS AND SPECIFICATIONS
ARE THE PROPERTY OF EDAC INC. AND
SHALL NOT BE REPRODUCED OR COPIED
OR USED AS THE BASIS FOR THE
MANUFACTURE OR SALE OF APPARATUS
WITHOUT WRITTEN PERMISSION.

ACAD REF DWG NUMBER 566-290-711

DRAWN: F. BRIONES DATE: SEP. 26/12

CHECKED: DATE:

PART NUMBER

566-290-711

DRAWING NUMBER

566-290-711

ISSUE

2