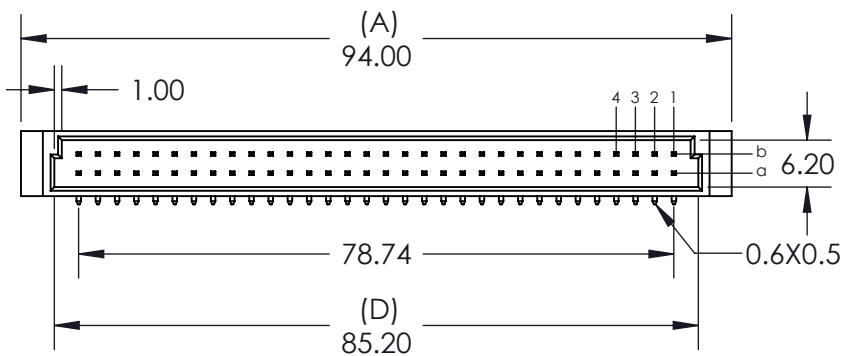
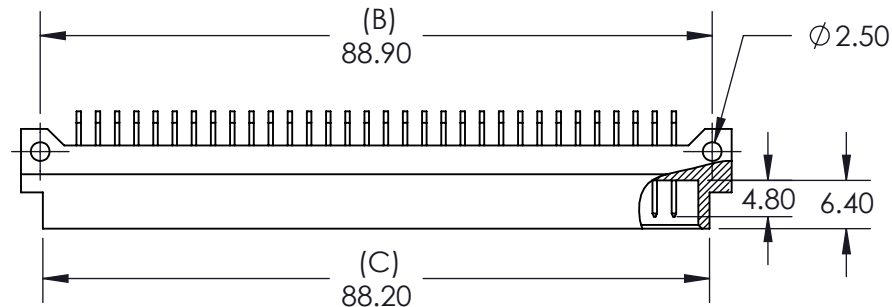
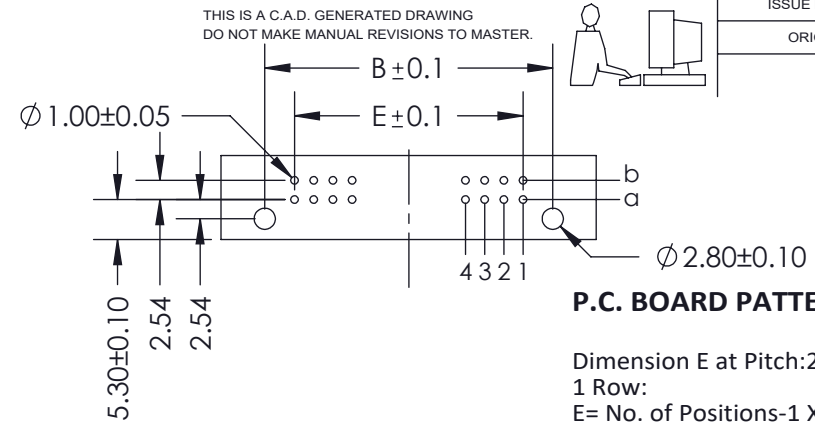


ISSUE NUMBER

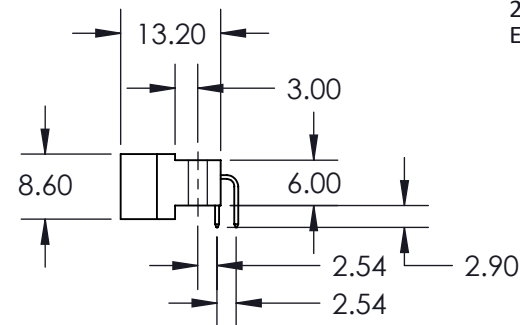
ORIGINAL ①

**Features:**

- High density 64 Contacts 2 Rows Metal-to-Metal Connector on 2.54mm (.100") Grid
- Contact Material and Finish: Brass with selective gold plating: 2- Gold Flash Plating and tin on tails 3- 15 μ " of Gold Plating
- Contact Tails: 0.6 x 0.5mm (.024" x .020") Rectangular 6- 30 μ " of Gold Plating
- Contact Spacing: 2.54 x 2.54mm (.100" x .100") single or double rows; or 2.54 x 5.08mm (.100" x .200") single or double rows
- Available in: 8, 10, 16, 20, 32, and 64 positions
- Connectors designed to meet DIN 41612-B specifications

**P.C. BOARD PATTERN**

Dimension E at Pitch: 2.54mm:
 1 Row:
 E= No. of Positions-1 X 2.54
 2 Rows:
 E= (No. of Positions/2)-1 X 2.54

**Specifications:**

- Current Rating: 2 Amperes @ 20°C
- Contact Material: Brass
- Contact Plating: Selective Gold Plating
- Contact Resistance: 30 milliohms, maximum
- Insulator Material: 30% Glass Filled PBT, UL 94V-0
- Insulation Resistance: Mated - 1000 Mega (10⁶) ohms min
- Dielectric Withstanding Voltage: 1000 V.A.C rms
- Basic Grid: 2.54mm (.100")
- Operating Temperature: -55°C to +105°C

463 Series Metal-To-Metal Plug DIN Connector

PART NUMBER: 463-064-660-212



YOUR CONNECTION TO QUALITY & SERVICE

EDAC INC
 TORONTO, ONTARIO
 CANADA

THESE DRAWINGS AND SPECIFICATIONS
 ARE THE PROPERTY OF EDAC INC. AND
 SHALL NOT BE REPRODUCED, OR COPIED
 OR USED AS THE BASIS FOR THE
 MANUFACTURE OR SALE OF APPARATUS
 WITHOUT WRITTEN PERMISSION.

ACAD REFERENCE NO. 463 -ENG-MASTER

DRAWN: R.STA.MONICA DATE: AUG.25/10

CHECKED: DATE:

SCALE: NTS SHEET 1 OF 1

DRAWING NUMBER 463 -ENG-MASTER
 ISSUE 1



THIS SERIES FULLY CONFORMS TO THE
 EUROPEAN UNION DIRECTIVES 2002/95/EC
 AND 2002/96/EC FOR RoHS COMPLIANCY